

## Arizona Medical Marijuana Program December 2018 Monthly Report

In December 2010, Arizona voters passed the Arizona Medical Marijuana Act (AMMA), A.R.S. §36-2801 *et seq.* The AMMA went into effect on April 14, 2011, making Arizona the fourteenth state to adopt a medical marijuana law. The AMMA designates the Arizona Department of Health Services (ADHS) as the licensing and issuing authority for the Arizona Medical Marijuana Program.

The AMMA monthly report highlights the most current program statistics. This includes data on active medical marijuana cardholders as well as transaction data from the sale of medical marijuana at non-profit medical marijuana dispensaries. Tables 1 through 6 and Figures 1 through 3 reflect data that are point in time. Table 7 and Figure 4 are data from the month of December, 2018. The Year-To-Date section which follows shows cumulative applications and approvals for 2018. For further information and statistics, please reference the Arizona Medical Marijuana Annual Report.

**Table 1. Arizona Medical Marijuana Active Qualifying Patients, Designated Caregivers and Dispensary Agents Profile**

Active Cardholder's Profile	Totals	Percent Total
1. Qualifying patients (QPs)	186,002	96.72%
2. Caregivers (CGs)	852	0.44%
3. Dispensary Agents (DA)	5,449	2.83%
<b>Total</b>	<b>192,303</b>	<b>100.00%</b>

\*Note: For caregivers and dispensary agents, these data reflect unique individuals, not the number of cards.

**Table 2. Arizona Medical Marijuana Active Qualifying Patients Profile**

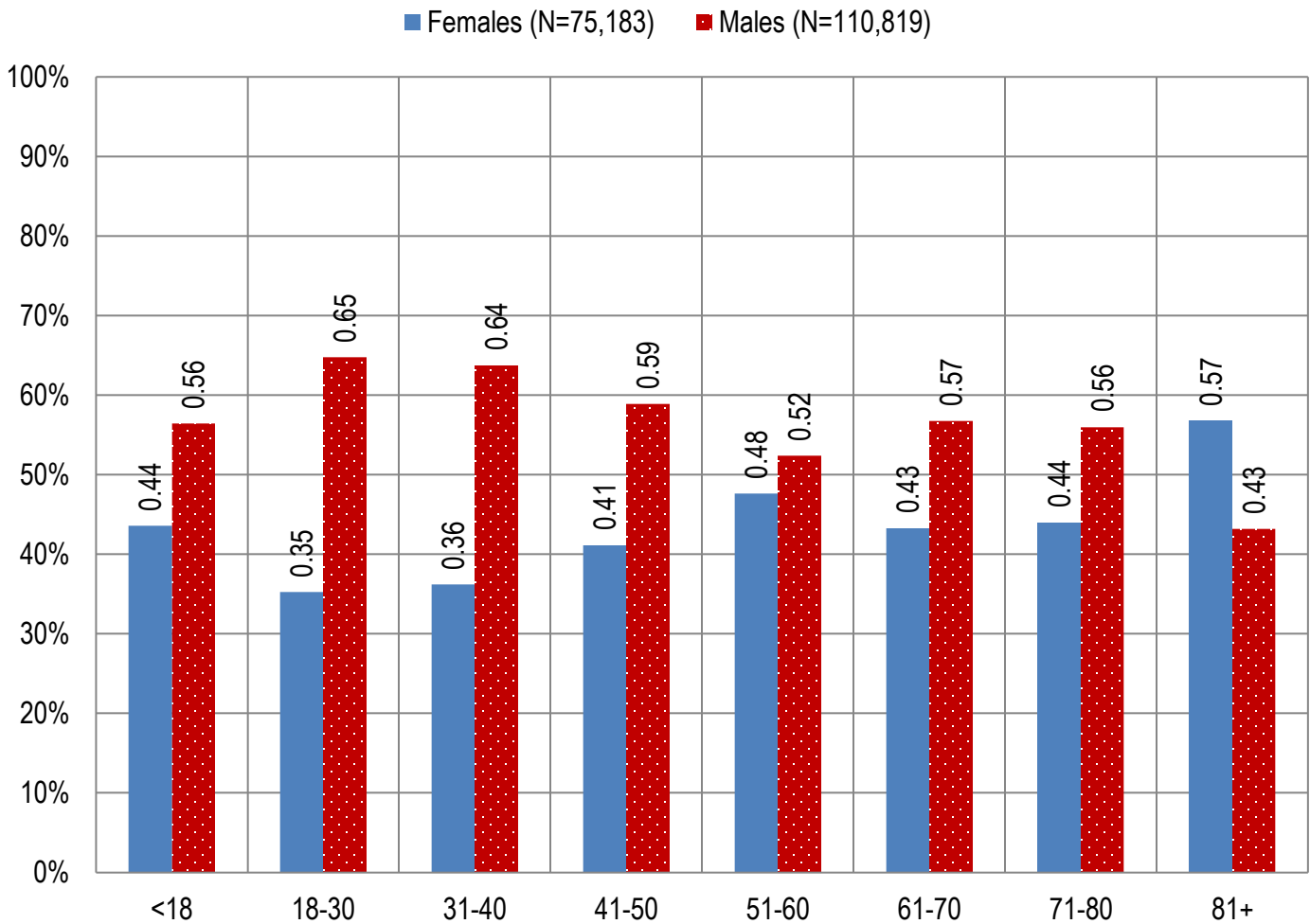
Application profile of qualifying patients	Totals	Percent Total
1. New applications	108,819	58.50%
2. Renewal applications	69,196	37.20%
3. Changed demographics	3,420	1.84%
4. Added Caregivers	190	0.10%
5. Change Dup	4,352	2.34%
6. Replaced Caregivers	24	0.01%
7. Removed Caregivers	1	0.00%
<b>Total</b>	<b>186,002</b>	<b>100.00%</b>

Approximately 11 percent (n = 20,405) of the active cardholders were determined to be SNAP eligible. Of the 20,405 that were determined to be eligible, 10,496 (~51%) were females and 9,909 (~49%) were males.

**Table 3. Arizona Medical Marijuana Active Qualifying Patients Characteristics**

Characteristics of Active Cardholders who are Qualified Patients	Totals (N =186,002)	Percent Total
<b>Patient Age-groups</b>		
Less than 18 years	179	0.10%
18 to 30 years	44,709	24.04%
31 to 40 years	38,836	20.88%
41 to 50 years	29,402	15.81%
51 to 60 years	30,110	16.19%
61 to 70 years	30,488	16.39%
71 to 80 years	10,300	5.54%
81 and older	1,978	1.06%
<b>Patient Gender</b>		
Male	110,819	59.58%
Female	75,183	40.42%

**Figure 1. Arizona Medical Marijuana Active Qualifying Patients Characteristics by Gender and Age (N = 186,002)**

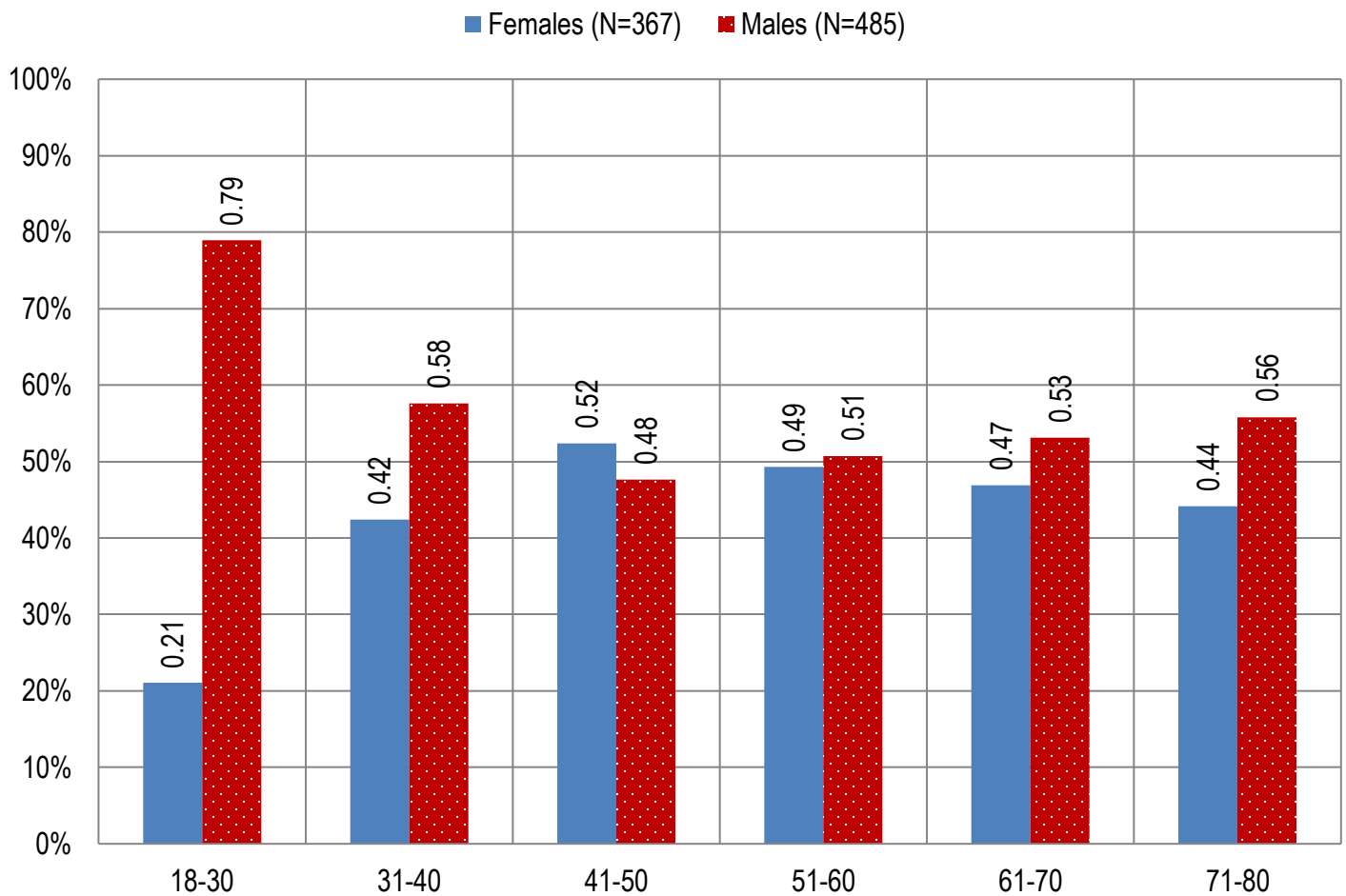


**Table 4. Arizona Medical Marijuana Active Qualifying Patients Medical Condition Profile**

Patient medical condition profile of Active Cardholders <sup>¶</sup>	Totals	Percent Total
Alzheimer's	77	0.04%
Cachexia	132	0.07%
Cancer	4,048	2.18%
Chronic Pain	162,908	87.58%
Crohn's Disease	599	0.32%
Glaucoma	1,093	0.59%
Hepatitis C	751	0.40%
HIV/AIDS	688	0.37%
Muscle Spasms	880	0.47%
Nausea	780	0.42%
Post-Traumatic Stress Disorder (PTSD)	2,299	1.24%
Sclerosis	32	0.02%
Seizures	1,250	0.67%
Two Or More Conditions	10,465	5.63%
<b>TOTAL</b>	<b>186,002</b>	<b>100.00%</b>

<sup>¶</sup>Unique debilitating conditions

**Figure 2. Arizona Medical Marijuana Active Designated Caregiver Characteristics by Gender and Age (N = 852)**



**Table 5. Arizona Medical Marijuana Active Qualifying Patients and Designated Caregivers Authorized for Cultivation**

Active cardholders cultivation status	Totals	Percent Total
Qualifying patients (n =186,002)	2,300	1.24%
Caregivers (n =852)	365	42.84%

**Table 6. Frequency of Qualifying Patients, Caregivers, and Dispensary Agents by County of Residence**

County	Qualifying Patients	Caregivers	Dispensary Agents*
Apache County	835	Count under 20	Count under 20
Cochise County	2,666	Count under 20	146
Coconino County	3,799	33	141
Gila County	1,751	Count under 20	34
Graham County	741	Count under 20	20
Greenlee County	196	Count under 20	Count under 20
La Paz County	347	Count under 20	Count under 20
Maricopa County	119,941	477	3,341
Mohave County	5,062	Count under 20	159
Navajo County	2,364	Count under 20	235
Pima County	25,954	153	577
Pinal County	10,901	38	192
Santa Cruz County	539	Count under 20	153
Yavapai County	9,277	51	384
Yuma County	1,629	Count under 20	Count under 20
<b>TOTAL</b>	<b>186,002</b>	<b>852</b>	<b>5,449</b>

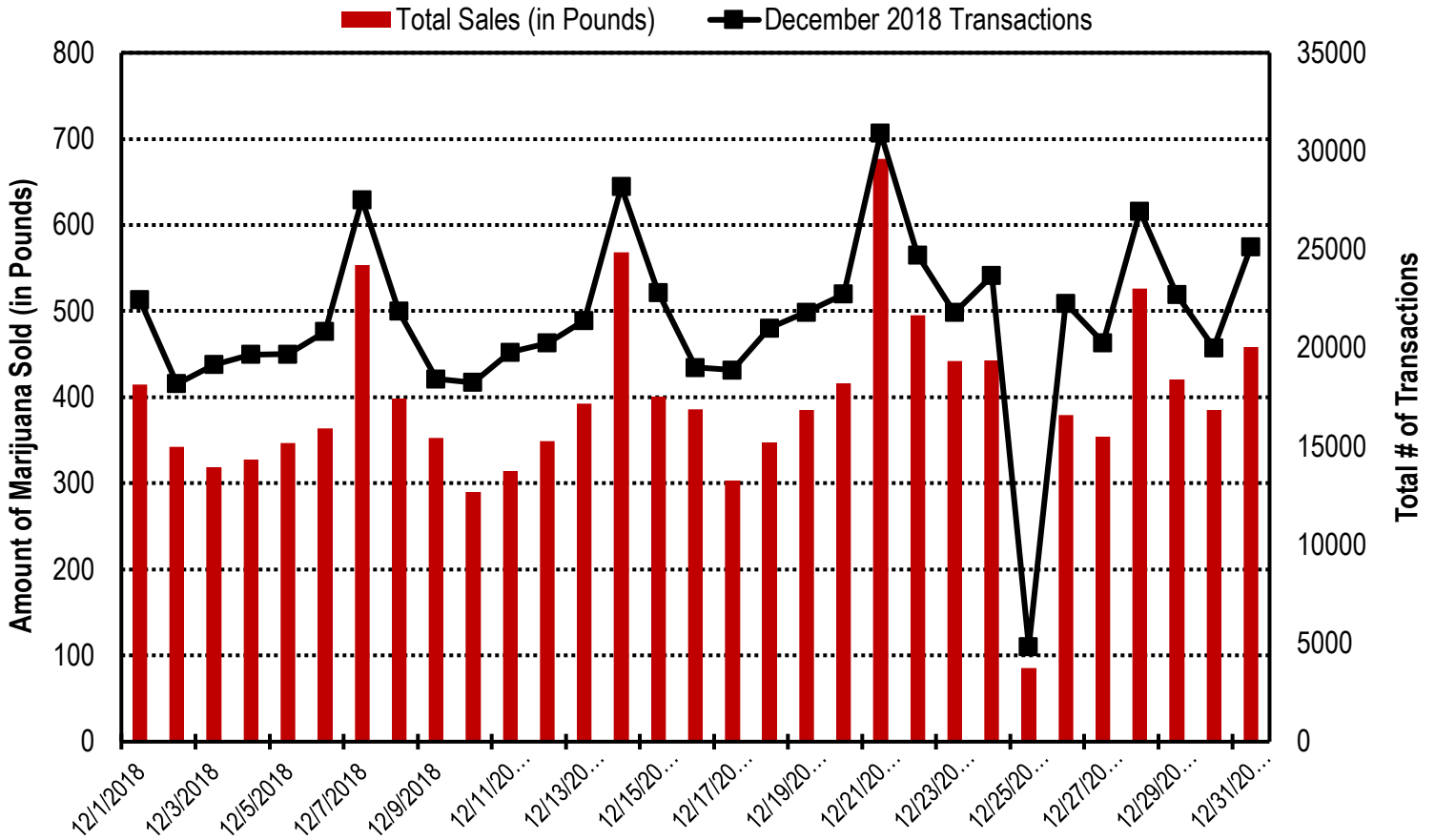
\* 26 Dispensary Agents are located outside of Arizona.

**Table 7. Type and Amount of Transactions at Medical Marijuana Dispensaries in December, 2018**

Type of Transaction <sup>†</sup>	Ounces (oz.)	Pounds
Marijuana	179,373.40	11,210.84
Marijuana Edible	7,618.24	476.14
Marijuana Other	8,803.16	550.20
<b>Total Marijuana Sold</b>	<b>195,794.80</b>	<b>12,237.17</b>

<sup>†</sup>Amounts have been rounded and may not added to exact totals

Figure 4. Daily Transactions and Amount of Marijuana Sold in December, 2018



**YEAR TO DATE**

**Table 1a. Arizona Medical Marijuana Applications Received- Application Profile**

<b>Applications Received Cardholder Profile</b>	<b>Totals</b>	<b>Percent Total</b>
Qualifying patients (QPs)	200,060	94.95%
Caregivers (CGs)	2,108	1.00%
Dispensary Agents (DA)	8,536	4.05%
<b>Total</b>	<b>210,704</b>	<b>100.00%</b>

\*Note: For caregivers and dispensary agents, these data reflect unique individuals, not the number of cards.

**Table 1b. Arizona Medical Marijuana Licensed Qualifying Patients, Designated Caregivers and Dispensary Agents Profile**

<b>Applications Approved Cardholder Profile</b>	<b>Totals</b>	<b>Percent Total</b>
Qualifying patients (QPs)	19,8017	95.10%
Caregivers (CGs)	2,022	0.97%
Dispensary Agents (DA)	8,179	3.93%
<b>Total</b>	<b>208,218</b>	<b>100.00%</b>

\*Note: For caregivers and dispensary agents, these data reflect unique individuals, not the number of cards.

**Table 2. Arizona Medical Marijuana Licensed Qualifying Patient Profile**

<b>Applications Received for Qualifying Patients</b>	<b>Totals</b>	<b>Percent Total</b>
New applications	113,256	57.20%
Renewal applications	72,812	36.77%
Changed demographics	4,715	2.38%
Added Caregivers	347	0.18%
Change Dup	6,831	3.45%
Replaced Caregivers	48	0.02%
Removed Caregivers	8	0.00%
<b>Total</b>	<b>198,017</b>	<b>100.00%</b>

**Table 3a. Arizona Medical Marijuana Applications Received- Patient Characteristics**

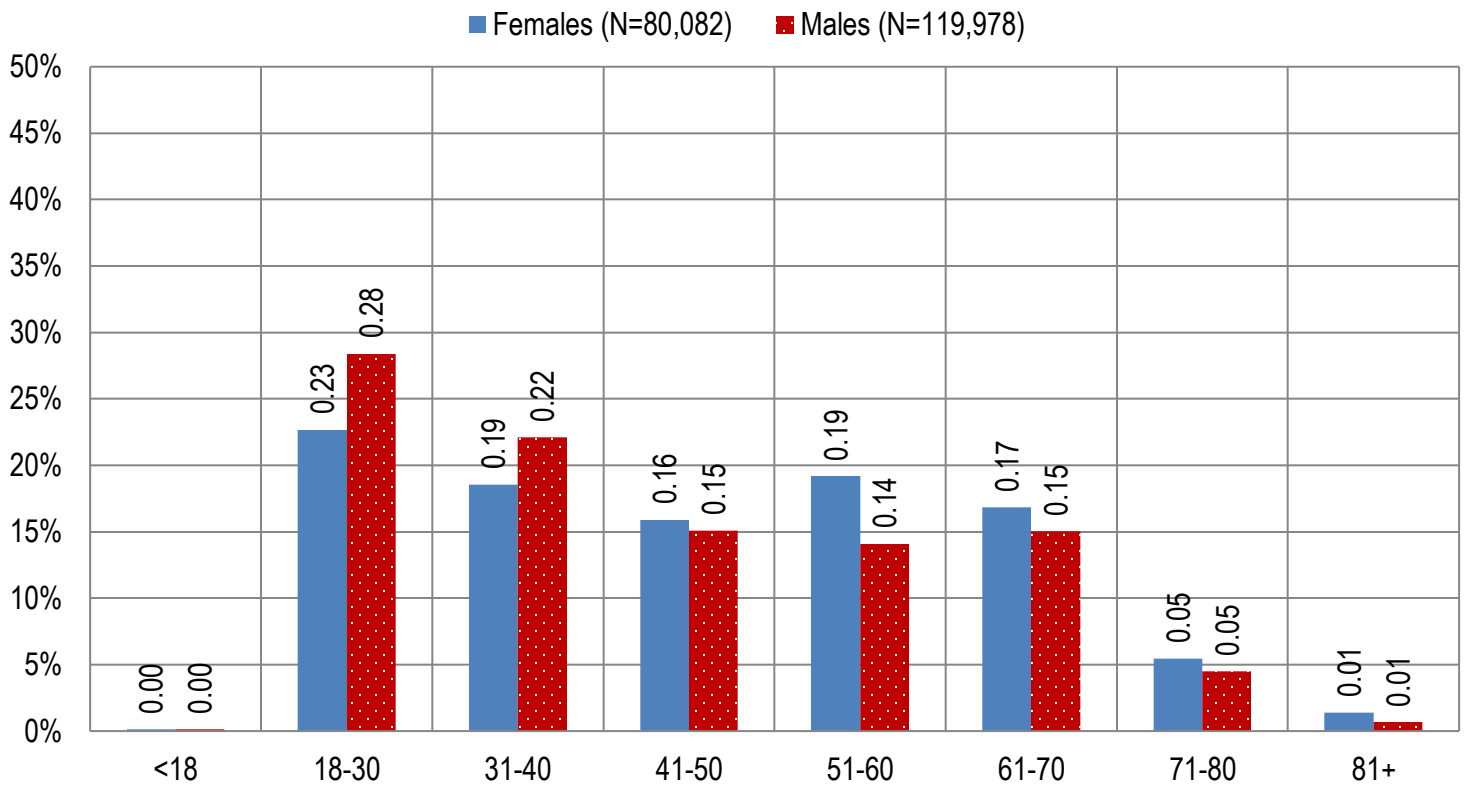
<b>Characteristics of Applications Received who are Qualified Patients</b>	<b>Totals (N = 200,060)</b>	<b>Percent Total</b>
<b>Patient Age-groups</b>		
Less than 18 years	219	0.11%
18 to 30 years	52,208	26.10%
31 to 40 years	41,354	20.67%
41 to 50 years	30,835	15.41%
51 to 60 years	32,280	16.14%
61 to 70 years	31,511	15.75%
71 to 80 years	9,760	4.88%
81 and older	1,893	0.95%
<b>Patient Gender</b>		
Male	119,978	59.97%
Female	80,082	40.03%

**Table 3b. Arizona Medical Marijuana Licensed Qualifying Patient Characteristics**

<b>Characteristics of Approved Applications who are Qualified Patients</b>	<b>Totals (N = 198,017)</b>	<b>Percent Total</b>
<b>Patient Age-groups</b>		
Less than 18 years	202	0.10%
18 to 30 years	51,637	26.08%
31 to 40 years	40,959	20.68%
41 to 50 years	30,514	15.41%
51 to 60 years	31,974	16.15%
61 to 70 years	31,211	15.76%
71 to 80 years	9,662	4.88%
81 and older	1,858	0.94%
<b>Patient Gender</b>		
Male	118,767	59.98%
Female	79,250	40.02%

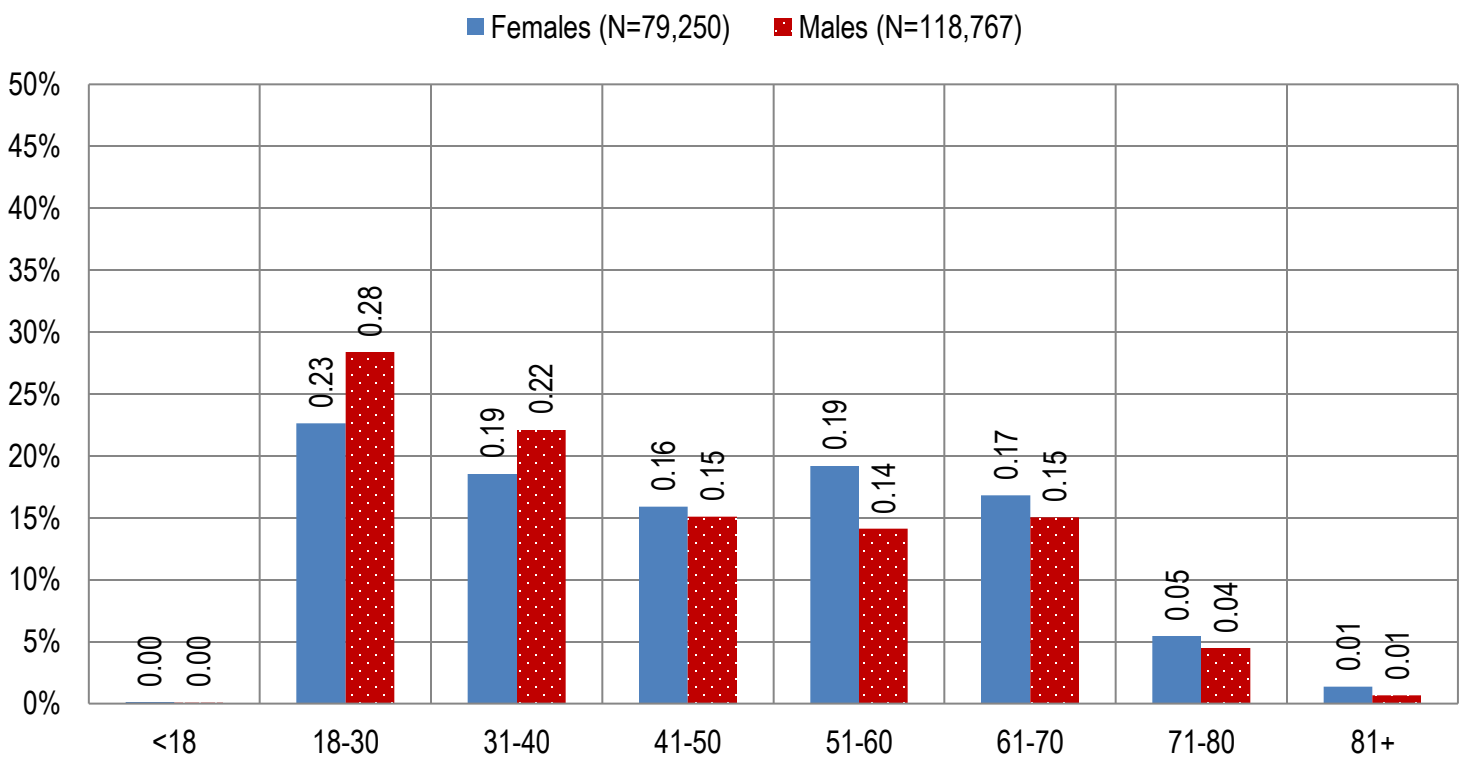
**Figure 1a. Arizona Medical Marijuana Applications Received- Patient Characteristics by Gender and Age**

**(N =200,060)**



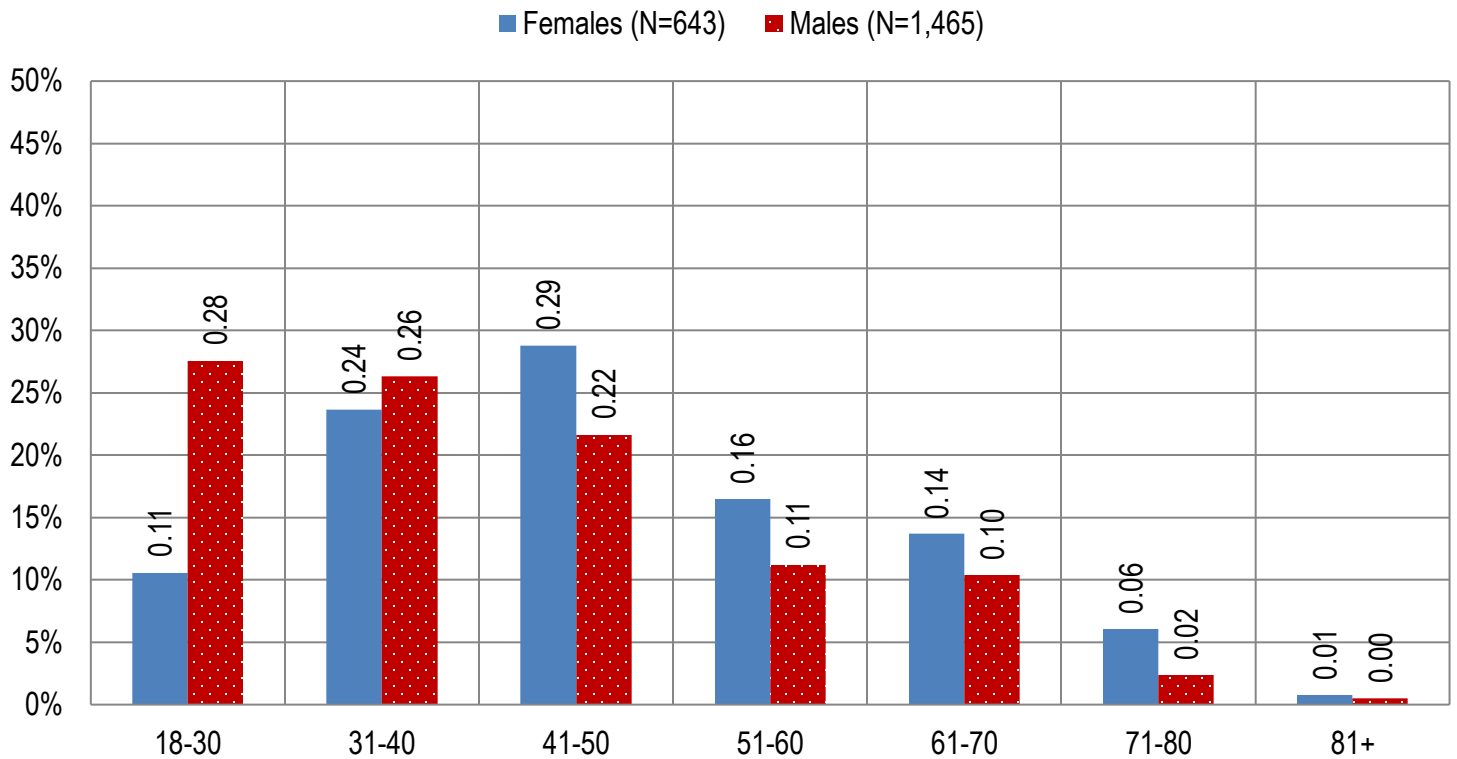
**Figure 1b. Arizona Medical Marijuana Licensed Qualifying Patient Characteristics by Gender and Age**

**(N =198,017)**

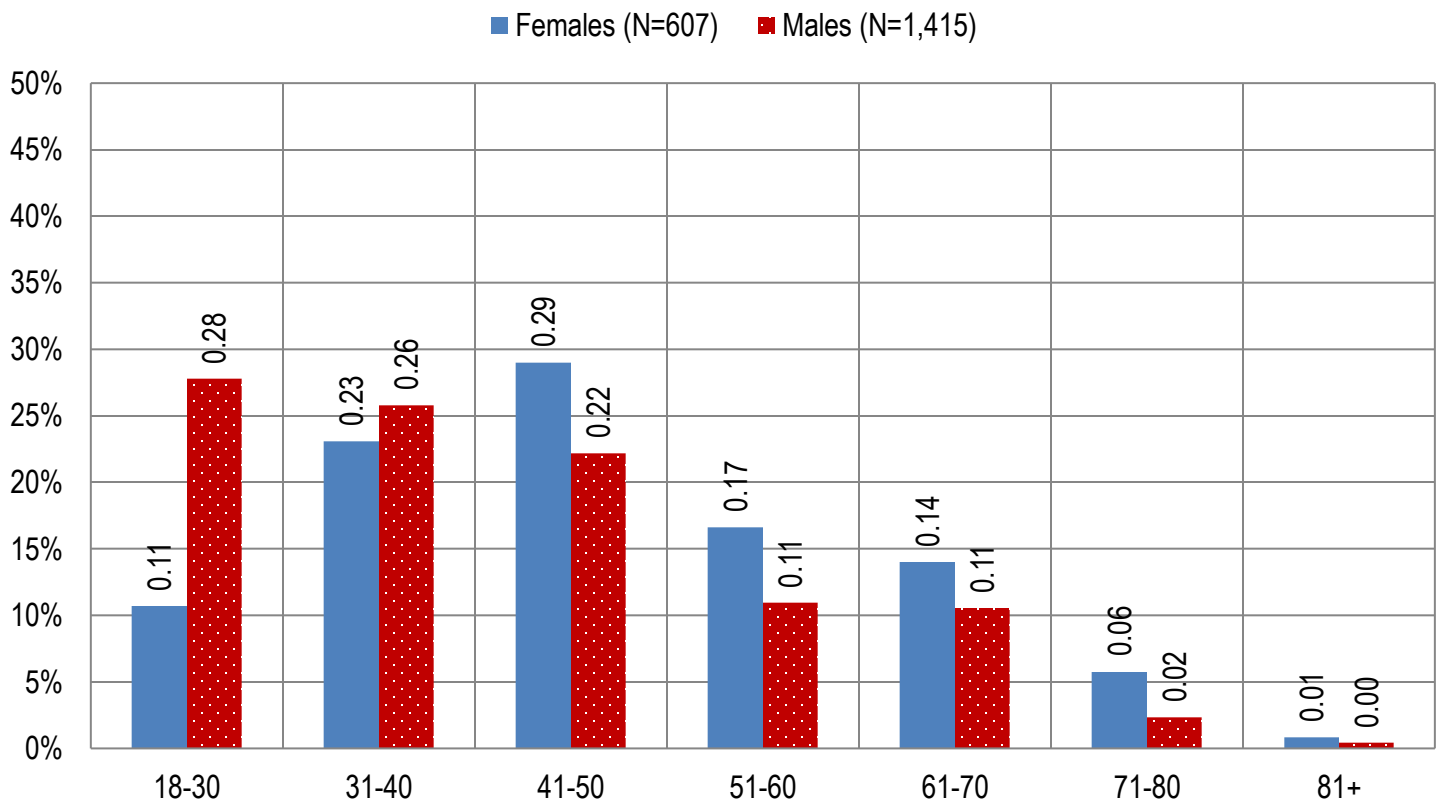




**Figure 2a. Arizona Medical Marijuana Applications Received- Caregivers Characteristics by Gender and Age**  
(N = 2,108)



**Figure 2b. Arizona Medical Marijuana Licensed Caregivers Characteristics by Gender and Age**  
(N = 2,022)



**Table 4a. Arizona Medical Marijuana Applications Received- Patient Medical Conditions Profile**

<b>Patient medical condition profile of Applications Received <sup>¶</sup></b>	<b>Totals</b>	<b>Percent Total</b>
Alzheimer's	90	0.04%
Cachexia	145	0.07%
Cancer	4,253	2.13%
Chronic Pain	175,373	87.66%
Crohn's Disease	632	0.32%
Glaucoma	1,148	0.57%
Hepatitis C	823	0.41%
HIV/AIDS	753	0.38%
Muscle Spasms	939	0.47%
Nausea	843	0.42%
Post-Traumatic Stress Disorder (PTSD)	2,488	1.24%
Sclerosis	36	0.02%
Seizures	1,364	0.68%
Two Or More Conditions	11,173	5.58%
<b>TOTAL</b>	<b>200,060</b>	<b>100.00%</b>

<sup>¶</sup>Unique debilitating conditions

**Table 4b. Arizona Medical Marijuana Licensed Qualifying Patients Medical Conditions Profile**

<b>Patient medical condition profile of Applications Approved<sup>¶</sup></b>	<b>Totals</b>	<b>Percent Total</b>
Alzheimer's	86	0.04%
Cachexia	141	0.07%
Cancer	4,206	2.12%
Chronic Pain	173,634	87.69%
Crohn's Disease	629	0.32%
Glaucoma	1,137	0.57%
Hepatitis C	815	0.41%
HIV/AIDS	740	0.37%
Muscle Spasms	923	0.47%
Nausea	836	0.42%
Post-Traumatic Stress Disorder (PTSD)	2,459	1.24%
Sclerosis	35	0.02%
Seizures	1,341	0.68%
Two Or More Conditions	11,035	5.57%
<b>TOTAL</b>	<b>198,017</b>	<b>100.00%</b>

<sup>¶</sup>Unique debilitating conditions

**Table 5a. Arizona Medical Marijuana Applications Received for Applicants Seeking Authorization to Cultivate**

Applications Received for cardholders with cultivation status	Totals	Percent total
Qualifying patients (n = 200,060)	2,613	1.31%

**Table 5b. Arizona Medical Marijuana Licensed Qualifying Patients and Designated Caregivers Authorized for Cultivation**

Approved cardholders cultivation status	Totals	Percent total
Qualifying patients (n = 198,017)	2,613	1.32%

**Table 7a. Type and Amount of Transactions at Medical Marijuana Dispensaries in 2018 to Date**

Type of Transaction <sup>†</sup>	Ounces (oz.)	Pounds
Marijuana	1,789,294.90	111,830.93
Marijuana Edible	79,733.55	4,983.35
Marijuana Other	81,624.03	5,101.50
<b>Total Marijuana Sold</b>	<b>1,950,652.48</b>	<b>121,915.78</b>

<sup>†</sup>Amounts have been rounded and may not added to exact totals

**Figure 5. Transactions and Amount of Marijuana Sold in 2018 by Month**

